



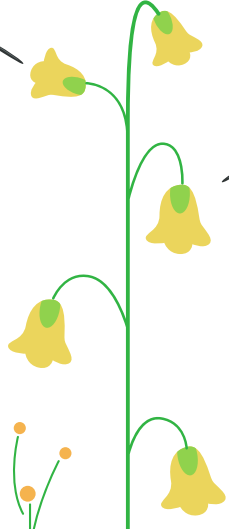
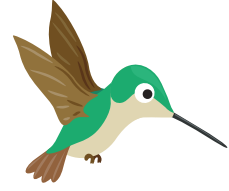
A Habitat

IN EVERY HOME AND SCHOOL

INSTRUCTIONS BOOKLET

LEARN OUTDOORS WITH OHS

Ohlone Humane Society
Promoting Education in Animal & Environmental Welfare

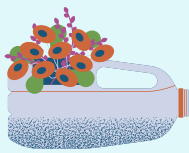




I'M READY! HOW DO I GET MY A HABITAT IN EVERY HOME AND SCHOOL AWARD?



1. Create a habitat or examine your current habitat. Read below for ideas & examples.
2. Does it have at least 2 of the required elements: food, water, cover, place for young?
3. Complete and submit the form found here: [A Habitat in Every Home and School AWARD](#)
4. Take two or more photos of your habitat and email with your name to:
humane_education@ohlonehumanesociety.org



KEEPING YOUR NEIGHBORS AND ALLERGIES IN MIND

- Small space habitats can be created in apartments, townhomes, condos, and even windowsills. To keep your insects happy and the people around you when you create your habitat, think about what will be the impact of hanging a bird feeder or plants that attract bees. The breeze can pollinate your plants also, so sometimes it's not necessary to bring bees in to help the plants.
- For balconies and windowsills very close to neighbors, a hummingbird feeder might be a better choice than a seed feeder or bird house that will end up with seeds on your balcony and your neighbor's. Rather than feeders, you might bring in plants that the birds enjoy eating.
- If possible, collaborate with your neighbors and create habitat together! Flower boxes on neighboring balconies or rooftops, and plantings that connect at the edges all allow wildlife to move through as they cross developed areas.



HABITATS

A habitat is a natural or human-created environment where a particular species of plants or animals lives and grows. Complete habitats provide food, water, shelter and space to raise young. In a city setting, even habitats with only some of the requirements can act as temporary lodgings or resting places as animals search for a more complete habitat in more remote areas.

Requirements for a Home or School Habitat:

You must have two of these in your habitat.

- **Food:** Plants attract local animals, including insects beneficial to life. Consult with your local nursery.
- **Water:** Fresh water is needed for visiting insects and animals and can be presented in different ways.
- **Shelter:** Shade and protection can be provided with plants, trees, human-created nests and boxes to protect the habitat from weather and predators
- **Place for Young:** Bird or bat houses, small trees, shrubs, or plants for pollinators can help provide spaces the animal needs to give birth and raise young. If a garden space is limited in floor space, plants and houses can be hung from overhead or lattices and provide additional options.

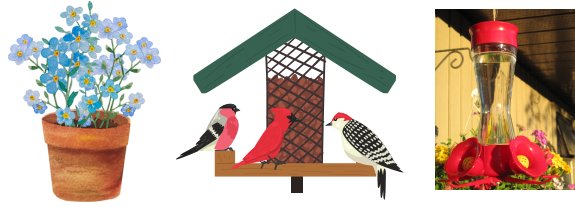
Shelter



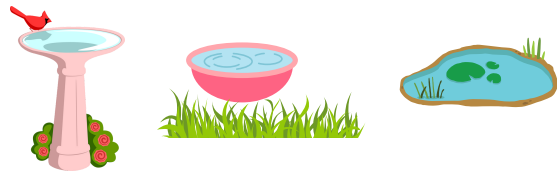
Place for Young



Food



Water



RECOMMENDED SUSTAINABLE PRACTICES FOR HOME OR SCHOOL HABITATS

- **Avoid using chemical pesticides**
Animals that eat insects and rodents or other small mammals can be poisoned if that animal or insect has eaten chemical pesticides. This not only harms that particular animal and the ones that eat it, but can end up with more rodents than when you started because you have harmed their predators. An alternative is to use chemical-free options like humane traps or try motion-detection lights or sprinklers or sonic repellants.

- **Avoid purchasing plants raised with chemical pesticides**
Ask your garden center for plants that were not treated with pesticides at all. In many nursery-raised plants, even if the label says “wildlife friendly,” the plants may not be necessarily pesticide free. Even low levels of pesticides can harm insect pollinators.

- **Grow native plants**
A native plant is one that occurs naturally in a specific region or habitat and was not brought there by humans. These plants have evolved alongside native wildlife and are adapted to local environmental conditions. Native plants are low maintenance, decrease pollution, and benefit wildlife and the environment.

Examples of small space habitats



Habitat with plants that attract animals & use fresh water; avoids chemicals



Habitat with plants that attract animals & uses fresh water



Habitat with plants that attract animals & provides shelter

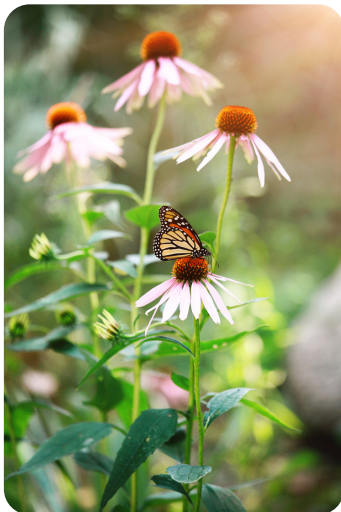
When you complete the tasks for the award, **OHS HUMANE EDUCATION**

will send you:

- A digital AWARD you can print at HOME OR AT SCHOOL with yours or your teacher's name, recognizing you and your small habitat you have designed and created, as well as access to our A HABITAT IN EVERY HOME AND SCHOOL WORKBOOK for young children.
- A big thanks from Ohlone Humane Society and the OHS Humane Education team for helping support our community's natural resources. With your permission, photos may be published in our [OHS Humane Education Newsletter!](#)



Habitat with plants that attract animals & provides shelter



Habitat with plants that attract animals & avoid chemicals

