



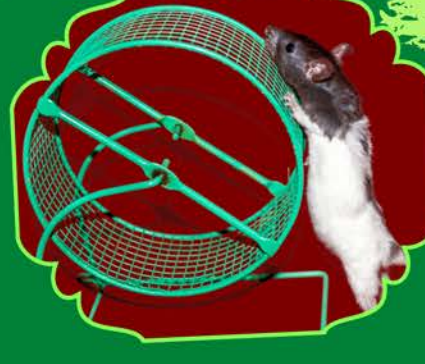
PETS! HOW THEY HELP US

OHLONE HUMANE SOCIETY

PETS HELP US STAY HEALTHY



PETS HELP US EXERCISE



PETS CAN BE SUPPORT ANIMALS



Emotional Support & Therapy Animals

...are animals that help a person have a sense of well-being, safety, or calm when the animal is with them. The person may feel better when petting the animal, have lower blood pressure, feel less lonely or afraid, deal with a bad memory, or can give the person a purpose taking care of their pet. An emotional support animal is usually a dog, but some people are supported by pigs, ducks, turkeys, monkeys, fish, snakes and even miniature horses. These animals are not trained to do specific tasks for a person like a service dog. Emotional support animals can often go with their people on airplanes and live in rental housing that may not usually allow pets. Emotional support dogs and cats can also be trained to be therapy animals to visit students, senior centers, and care homes.



PETS CAN BE SERVICE ANIMALS

Service Animals

...are dogs that are trained to do specific tasks to help people who are disabled. A registered service animal is always a dog in California and many other states. Tasks that a service animal might perform include warning a person about a sound, guiding a blind or deaf person along the street or in unusual places, pressing an elevator button, helping to bring things to a person who is in a wheelchair, weak or unable to get out of bed. They can also be trained to alert others or stand guard if the individual is experiencing a seizure, remind the individual to take medication, detect when a person with diabetes has low blood sugar, or help children or adults with mental disorders like autism or post-traumatic stress disorder and panic attacks. Service animals can go with their people on airplanes and live in rental housing that may not usually allow pets.

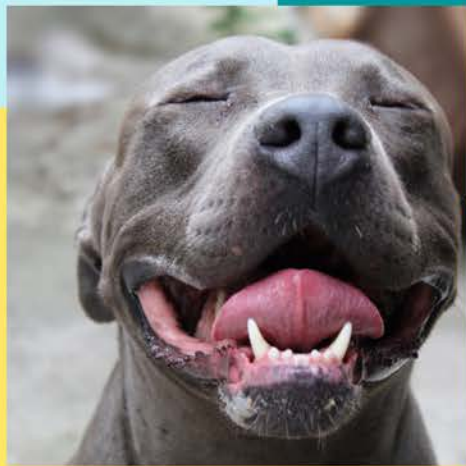
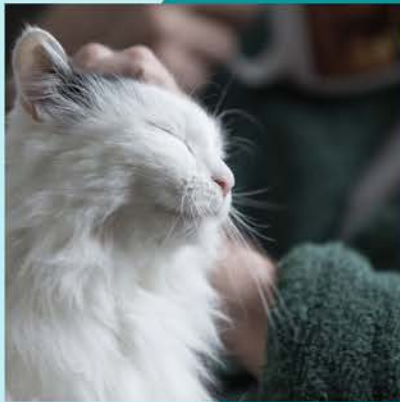


PETS CAN BE WORKING DOGS

Specially trained dogs help at airports and with search and rescue



H
A
P
P
I
N
E
S
S
S



K
I
N
D
N
E
S
S

SAME OR DIFFERENT?

Cross out the picture that is different from the rest.



**Spay/Neuter,
Vaccinate &
Microchip Your
Pet**



GET HEALTHY WITH A PET!

EDUCATE!

